



**LANDMARK**  
ENGINEERING SERVICES

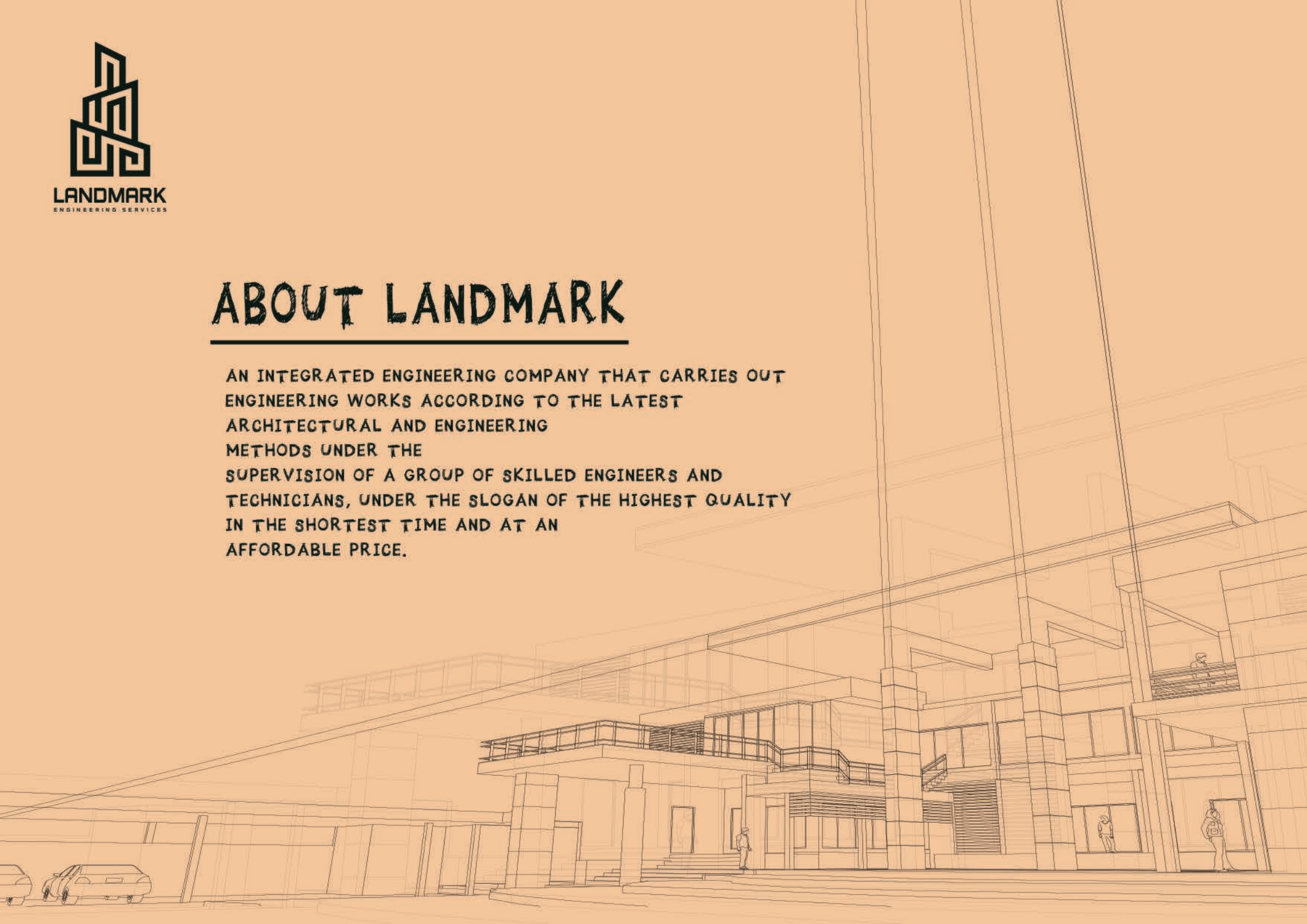




# ABOUT LANDMARK

---

AN INTEGRATED ENGINEERING COMPANY THAT CARRIES OUT ENGINEERING WORKS ACCORDING TO THE LATEST ARCHITECTURAL AND ENGINEERING METHODS UNDER THE SUPERVISION OF A GROUP OF SKILLED ENGINEERS AND TECHNICIANS, UNDER THE SLOGAN OF THE HIGHEST QUALITY IN THE SHORTEST TIME AND AT AN AFFORDABLE PRICE.







**LANDMARK**  
ENGINEERING SERVICES

## OUR VALUES

WHILE WE ARE EXTREMELY BUDGET CONSCIOUS,  
LONG-TERM AFFORDABILITY IS ALSO TOP OF MIND.  
WE LOOK AT THE BIG PICTURE,  
FROM CONTROLLING CONSTRUCTION BUDGETS TO PROJECTING  
FUTURE MAINTENANCE COSTS.  
WE LOOK FOR OPPORTUNITIES TO GIVE YOU MORE THAN EXPECTED.  
AND WE STRIVE FOR THAT PERFECT  
BALANCE OF QUALITY AND  
LOW COST TO DELIVER THE ULTIMATE IN VALUE.







**LANDMARK**  
ENGINEERING SERVICES

# OUR SERVICES

- 1 - CONCRETE AND METAL CONSTRUCTION.
- 2 - FINISHING AND DECORATING.
- 3 - LANDSCAPING AND IRRIGATION.
- 4 - SWIMMING POOLS AND ARTIFICIAL LAKES.
- 5 - AIR CONDITIONING AND FIRE NETWORKS.
- 6 - GENERAL MAINTENANCE.
- 7 - ARCHITECTURAL AND STRUCTURAL DESIGNS.
- 8 - EXTRACTING LICENSES.

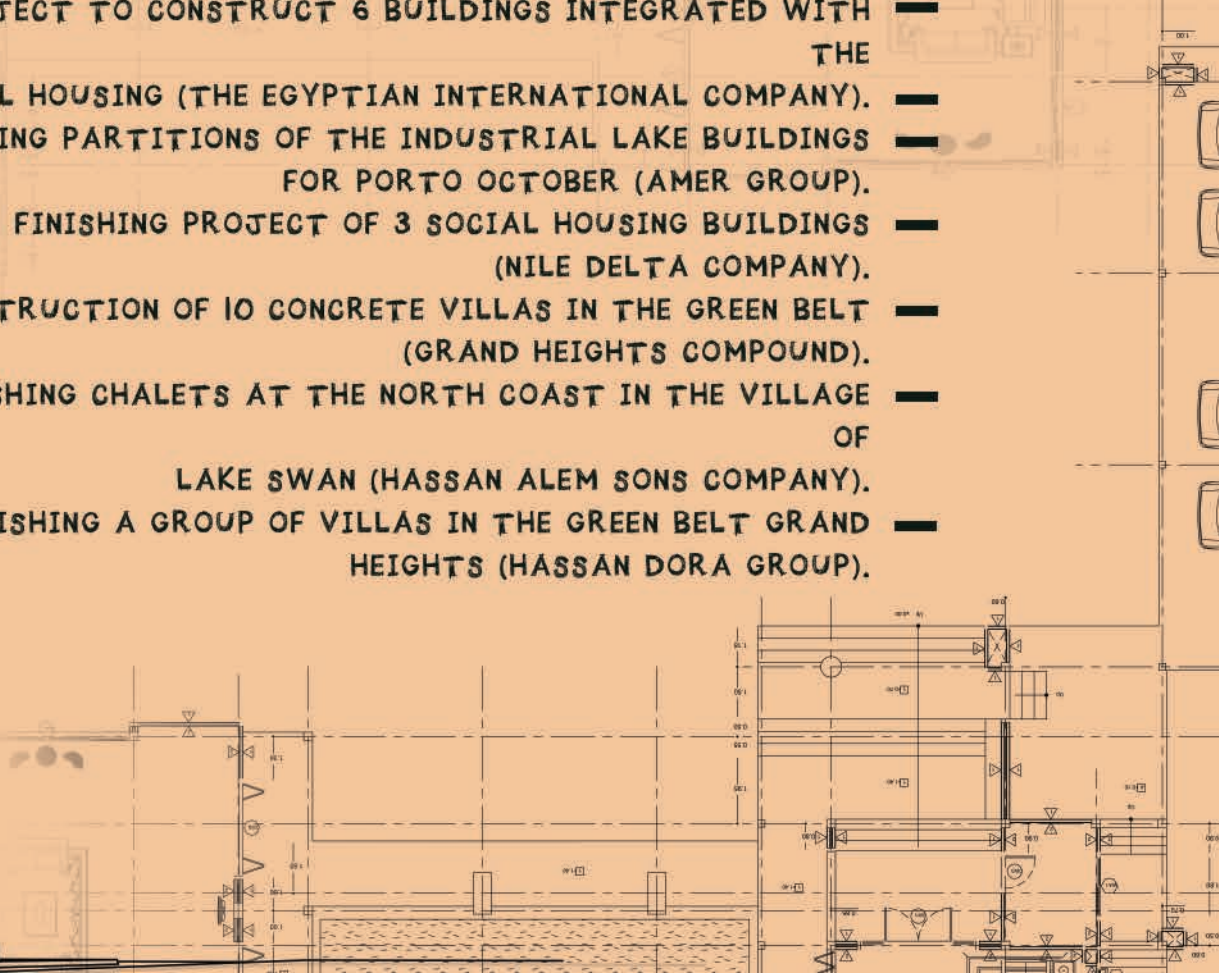
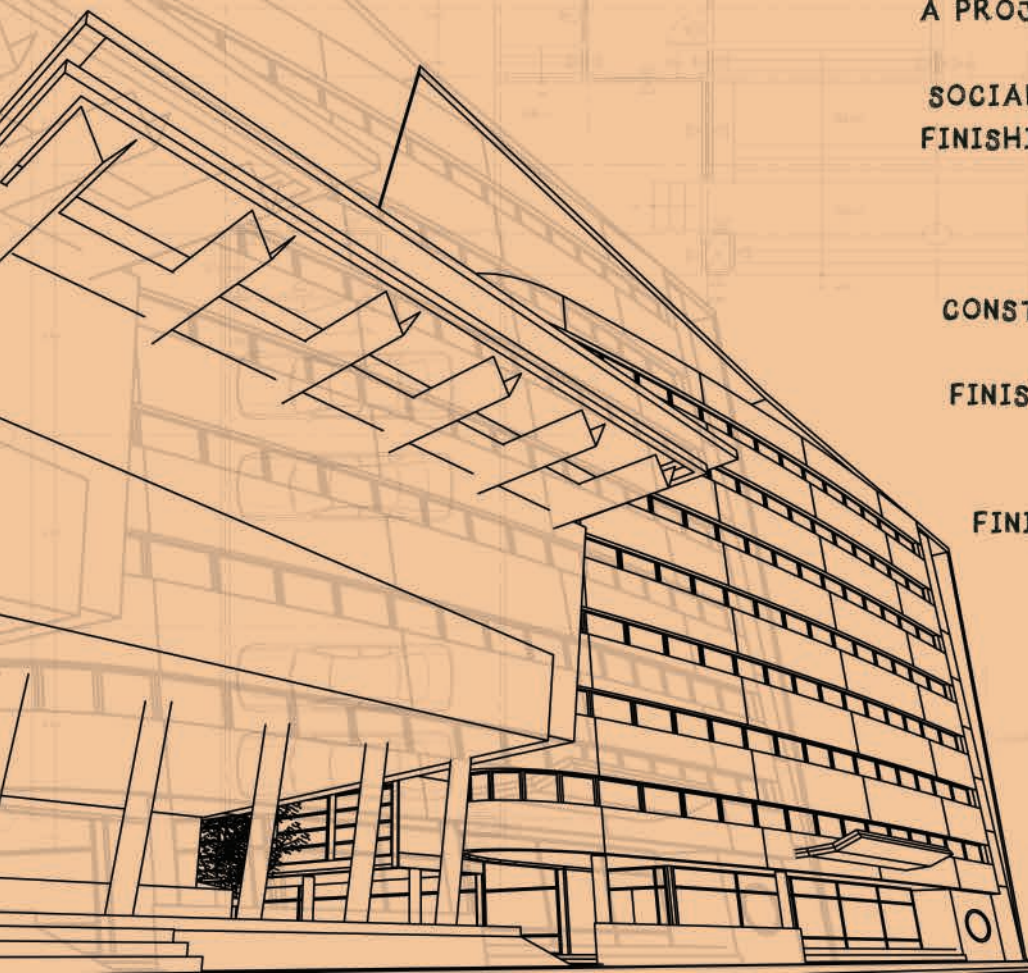




**LANDMARK**  
ENGINEERING SERVICES

# OUR PREVIOUS WORK

- A PROJECT TO CONSTRUCT 6 BUILDINGS INTEGRATED WITH THE SOCIAL HOUSING (THE EGYPTIAN INTERNATIONAL COMPANY).
- FINISHING PARTITIONS OF THE INDUSTRIAL LAKE BUILDINGS FOR PORTO OCTOBER (AMER GROUP).
- FINISHING PROJECT OF 3 SOCIAL HOUSING BUILDINGS (NILE DELTA COMPANY).
- CONSTRUCTION OF 10 CONCRETE VILLAS IN THE GREEN BELT (GRAND HEIGHTS COMPOUND).
- FINISHING CHALETS AT THE NORTH COAST IN THE VILLAGE OF LAKE SWAN (HASSAN ALEM SONS COMPANY).
- FINISHING A GROUP OF VILLAS IN THE GREEN BELT GRAND HEIGHTS (HASSAN DORA GROUP).





# OUR PREVIOUS WORK

- DESIGNED PROJECT FOR THE FIRST FULLY TECHNOLOGICAL AVIATION CITY AND INTERNATIONAL AIRPORT IN THE MIDDLE EAST.
- PERIODIC MAINTENANCE FOR THE LANDSCAPES AND IRRIGATION SYSTEMS (CITRA EGYPT EMIRATES COMPANY).
- FINISHING PROJECT OF 3 SOCIAL HOUSING BUILDINGS (SOUTH SOHAG COMPANY).
- SUPERVISING ON MANY PROJECTS IMPLEMENTED AS FOLLOWS :
  - 1 - DAR AL MAREEF STORES.
  - 2 - THE COVERED HALL IN THE 6TH OF OCTOBER CITY CLUB.







**LANDMARK**  
ENGINEERING SERVICES

# WORK SAMPLES







**LANDMARK**  
ENGINEERING SERVICES

# WORK SAMPLES







**LANDMARK**  
ENGINEERING SERVICES

# WORK SAMPLES





# WORK SAMPLES



**LANDMARK**  
ENGINEERING SERVICES







**LANDMARK**  
ENGINEERING SERVICES

# WORK SAMPLES







**LANDMARK**  
ENGINEERING SERVICES

# WORK SAMPLES





# WORK SAMPLES



**LANDMARK**  
ENGINEERING SERVICES







**LANDMARK**  
ENGINEERING SERVICES

# WORK SAMPLES





# WORK SAMPLES



**LANDMARK**  
ENGINEERING SERVICES





# WORK SAMPLES



**LANDMARK**  
ENGINEERING SERVICES







**LANDMARK**  
ENGINEERING SERVICES

# WORK SAMPLES



Infinix HOT





**LANDMARK**  
ENGINEERING SERVICES

# WORK SAMPLES







**LANDMARK**  
ENGINEERING SERVICES

# WORK SAMPLES







**LANDMARK**  
ENGINEERING SERVICES

# WORK SAMPLES







**LANDMARK**  
ENGINEERING SERVICES

# WORK SAMPLES





# WORK SAMPLES



**LANDMARK**  
ENGINEERING SERVICES







**LANDMARK**  
ENGINEERING SERVICES

Office 304 3rd AGYAD View Mall, Behind silver mall. 6 October City

---

8 El-Khalifa El-Rady, El-Hay El-Sabee, Nasr City

---

01004303500 - 01213005258 - 01004538073

---

[LANDMARKGROUP30@GMAIL.COM](mailto:LANDMARKGROUP30@GMAIL.COM)